

# June

## Newsletter



### Communication, Language and Literacy Café

Thursday 12th June

1:45pm—2:45pm



Please come and join us for our Communication, language and Literacy Café. We would love to show you some things we learn at nursery.

All parents/grandparents welcome.



Our yearly carnival will be on Thursday 3rd July at 1.30pm

Our theme is

### 'A GRAND DAY OUT'

We hope everyone will support us by watching our carnival and coming into Brisbane Park playground for singing/dancing, raffle and refreshments.

### SCHOOL TRIPS

Sunflowers—Brockhole tree top nets

Monday 16th June

Bluebells—Lakes Aquarium/Haverthwaite Railway

Wednesday 25th June

Buttercups—Greenlands Farm

Thursday 26th June



Letters for the trips have been sent home and put on 'Family'.

### BINGO NIGHT

The Griffin Community Centre

Tuesday 17th June  
7.30pm

Come along and join the fun!

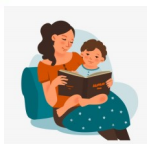


School finishes for the Summer holidays on Thursday 17th July (Teddy Bear's picnic on Friday 18th) and re-opens Wednesday 3rd September

### Book Bag reminder

Please remember your child's book bag every Wednesday so that they can change their books.

We encourage the children to handle the books and be enthusiastic about the images but we are also teaching them how to take care of our books. We ask that parents continue to help us with this at home, especially with school books.



CHILDREN FALL IN LOVE WITH BOOKS BECAUSE OF THE MEMORIES CREATED WHEN THEY SNUGGLE UP AND READ WITH SOMEONE THEY LOVE.  
—RAISING READERS



### Dates for your diary

Children who will be starting Brisbane Park in September will have their move up day on Monday 30th June either in the morning or the afternoon. Brisbane Park will be in touch to inform you when your visit will be. You will also receive an email from Brisbane Park with information about your parent and child visit on Tuesday 17th June.

Hindfest—week beginning 7th July. Date TBC

Teddy Bear's Picnic—Friday 18th July

All children and parents are invited to Barrow Park to celebrate the end of the school year and have lots of fun with their friends. Children must attend with an adult and bring a picnic.

